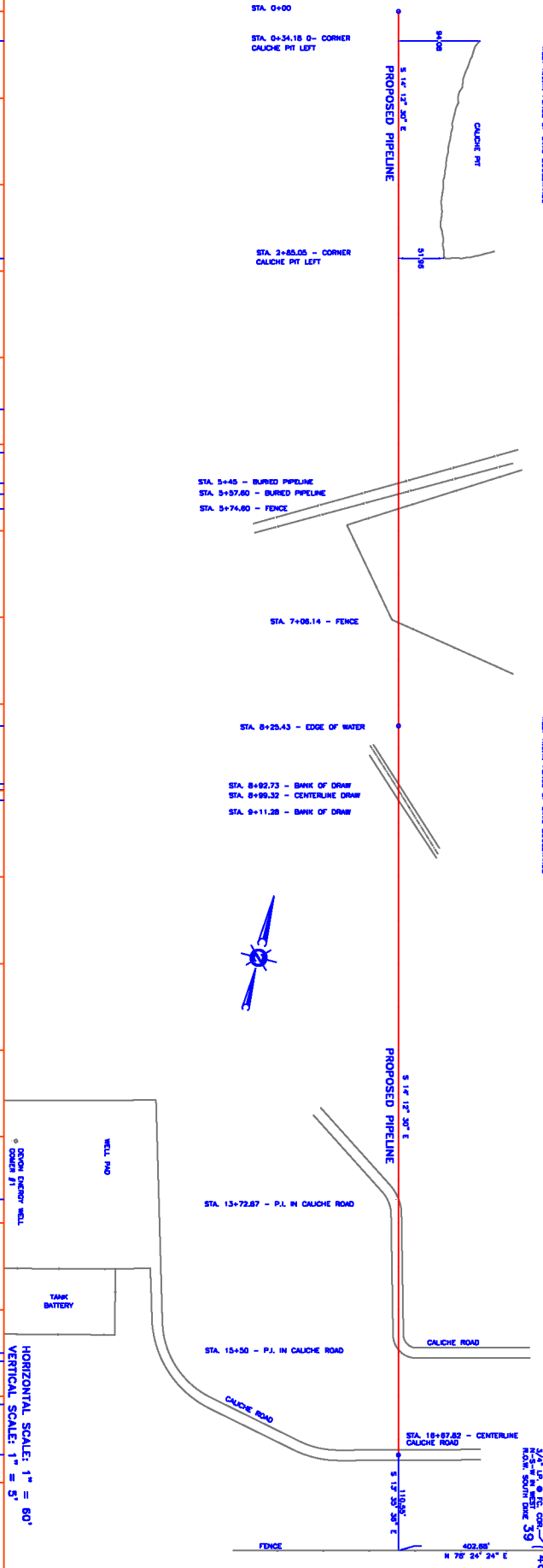
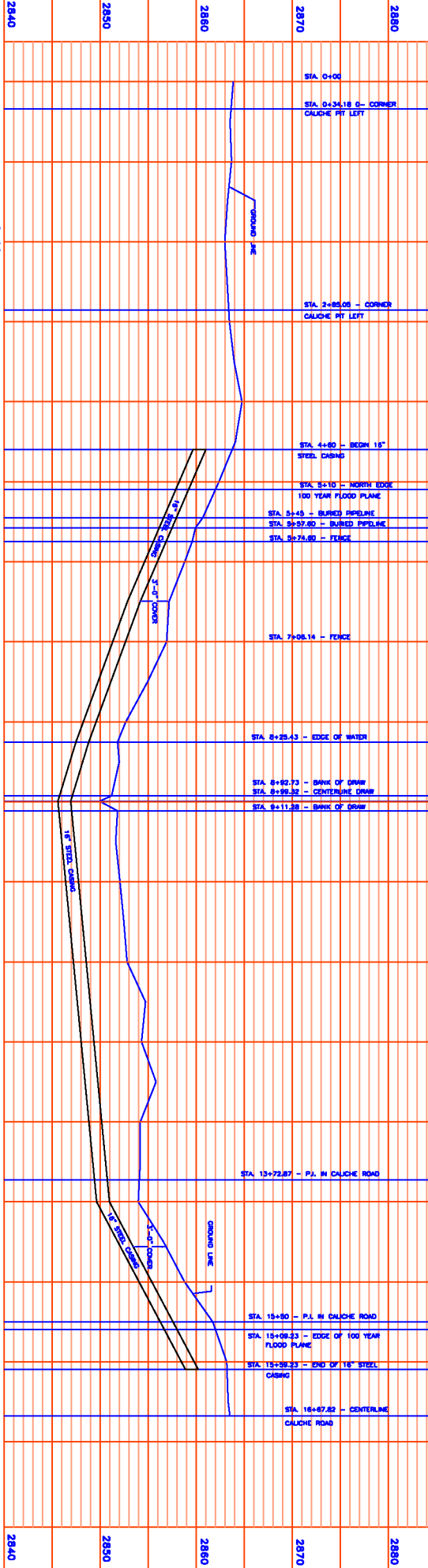


2 1/4" L.P. & 1 1/2" O.S. -  
R.O.W. SOUTH SIDE 39'

402.85'  
N 78° 24' 24" E  
5 17' 33" 30" E



HORIZONTAL SCALE: 1" = 60'  
VERTICAL SCALE: 1" = 5'



THIS DRAWING IS THE PROPERTY OF DEVON ENERGY CORPORATION. IT IS TO BE USED ONLY FOR THE PROJECT AND LOCATION SPECIFICALLY IDENTIFIED HEREON. IT IS NOT TO BE REPRODUCED, COPIED, OR TRANSMITTED IN ANY FORM OR BY ANY MEANS, ELECTRONIC OR MECHANICAL, INCLUDING PHOTOCOPYING, RECORDING, OR BY ANY INFORMATION STORAGE AND RETRIEVAL SYSTEM, WITHOUT THE WRITTEN PERMISSION OF DEVON ENERGY CORPORATION. ANY UNAUTHORIZED USE OF THIS DRAWING IS STRICTLY PROHIBITED. THE USER OF THIS DRAWING AGREES TO HOLD DEVON ENERGY CORPORATION HARMLESS FROM AND AGAINST ALL CLAIMS, DAMAGES, LOSSES, AND EXPENSES, INCLUDING REASONABLE ATTORNEY'S FEES, THAT MAY BE ASSERTED AGAINST OR INCURRED BY DEVON ENERGY CORPORATION AS A RESULT OF SUCH UNAUTHORIZED USE.

NO.	DESCRIPTION	DATE	BY	REVISIONS
1	ISSUED FOR CONSTRUCTION	3/7/11	JLB	
2	REVISED PER COMMENTS	3/7/11	JLB	
3	REVISED PER COMMENTS	3/7/11	JLB	
4	REVISED PER COMMENTS	3/7/11	JLB	
5	REVISED PER COMMENTS	3/7/11	JLB	
6	REVISED PER COMMENTS	3/7/11	JLB	
7	REVISED PER COMMENTS	3/7/11	JLB	
8	REVISED PER COMMENTS	3/7/11	JLB	
9	REVISED PER COMMENTS	3/7/11	JLB	
10	REVISED PER COMMENTS	3/7/11	JLB	

**Devon ENERGY CORPORATION**  
 20 North Broadway, Suite 1500  
 Oklahoma City, Oklahoma 73102-4360  
 Fax: (405) 525-4200

**DEVON ENERGY CORPORATION**  
**COMER LEASE**  
 ECOR COUNTY, TEXAS

**MONAHANS DRAW CROSSING**  
 DRAWN BY: J.L.B.  
 DATE: 3/7/11  
 CHECKED BY:  
 DRAWING NO. 11-014-01