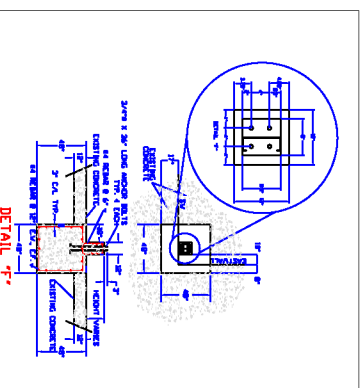
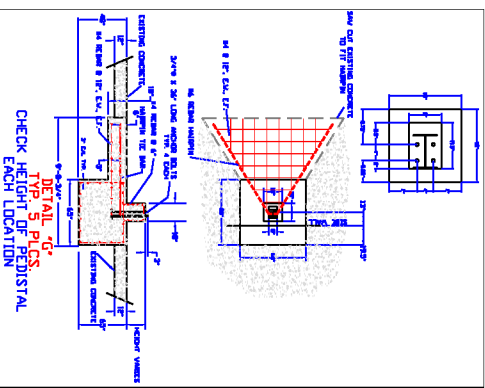
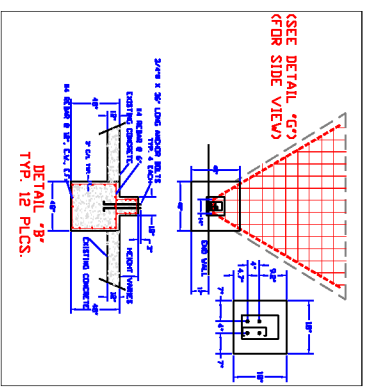


LEGEND

- (1A) REBAR REINFORCED PERMANENT TO EXISTING CONCRETE STRUCTURE
- (1B) 3/4" THICKED REINFORCED ALUMINUM
- (1C) EXISTING REINFORCED ALUMINUM
- (1D) 3/4" THICKED REINFORCED ALUMINUM
- ALL CONCRETE TO BE 3000 PSI COMPRESSIVE STRENGTH & 80 BARS
- ALL REBAR TO BE GRADE 60

SCALE: 1" = 16'
(DO NOT SCALE DETAILS)



REFERENCE DRAWINGS		REVISIONS	
NUMBER	DESCRIPTION	DATE	BY

ENGINEERED PIPELINE SYSTEMS, INC.
P.O. BOX 4888
CORPUS, TEXAS 79708

BDA COMPANY
CERAM-KOTE

BUILDING FOUNDATION

DRAWN BY: C.G.H. CHECKED BY: _____
DATE: 4/28/11 DRAWING NO.: 11-052-01